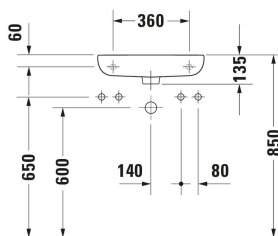
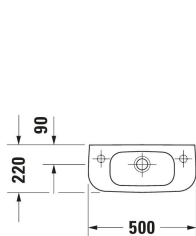


D-Code Hand basin # 07065000082 / 07065000092

| < 500 mm > |



Hand basin	Dimension	Weight	Order number
Semi-circular, Tap hole platform: Yes, Overflow: Yes, Underside glazed, Back side glazed: No, 500 mm, Internal dimensions: 300x160 mm			
Colors			
00 White Alpin			
Variant			
● White High Gloss, Rectangular, Number of washing areas: 1 Middle, Number of faucet holes per wash area: 1 Right	500x220 mm	7.000 kg	07065000082
● White High Gloss, Rectangular, Number of washing areas: 1 Middle, Number of faucet holes per wash area: 1 Left	500x220 mm	7.000 kg	07065000092
Infobox			
Mandatory in combination with a bottle trap			
Accessory			
Push-open waste Suitable for washbasin with overflow, Ø 63,5 mm	Ø 63.5 mm	0.34 kg	005052
Recommended faucets			
Single lever basin mixer S Ceramic cartridge, Height: 155 mm, Projection: 91 mm, Spray mode: Normal spray, Aerator adjustable, recommended operating pressure: 1 - 5 bar, Noise class: I, Handle version: lever handle, 121 x 41 mm	121 x 41 mm		C11010001
Single lever basin mixer S Chrome, Ceramic cartridge, Height: 152 mm, Projection: 100,5 mm, Spray mode: Normal spray, Aerator adjustable, Temperature limit adjustable, recommended operating pressure: 1 - 5 bar, Noise class: I, Handle version: lever handle, 137 x 42 mm	137 x 42 mm		B21010001
Single lever basin mixer S Chrome, Ceramic cartridge, Height: 155,5 mm, Projection: 101 mm, Water connection: Flexible connecting hoses, 3/8", Spray mode: Normal spray, Aerator adjustable, Temperature limit adjustable, recommended operating pressure: 1 - 5 bar, Noise class: I, Handle version: lever handle, 137 x 42 mm	137 x 42 mm		B11010002

D-Code Hand basin # 07065000082 / 07065000092

|< 500 mm >|

Single lever basin mixer S Chrome, Ceramic cartridge, Height:
155,5 mm, Projection: 101 mm, Spray mode: Normal spray,
Aerator adjustable, Temperature limit adjustable,
recommended operating pressure: 1 - 5 bar, Noise class: I,
Handle version: lever handle, 137 x 41 mm

137 x 41 mm

B11010001

All drawings contain the necessary measurements which are subject to standard tolerances. They are stated in mm and are non-binding. Exact measurements, in particular for customised installation scenarios, can only be taken from the finished piece.