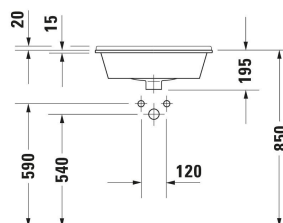
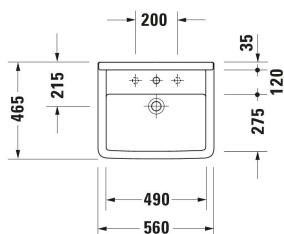


**Starck 3 Built-in basin # 0302560000**

| &lt; 560 mm &gt; |



Built-in basin	Dimension	Weight	Order number
Washbasin version: Installation, 560x465 mm, Internal dimensions: 490x275 mm, Tap hole platform: Yes, Overflow: Yes, Type of mounting: counter top			
<b>Colors</b>			
00 White Alpin			
<b>Variant</b>			
● Washbasin version: counter top, White High Gloss, Number of faucet holes per wash area: 1	560x465 mm	14.000 kg	0302560000
Sanitary ceramics with the special WonderGliss surface finish will remain clean and attractive-looking for a long time to come. When ordering WonderGliss please add a "1" as eleventh digit to the model number.			
<b>Accessory</b>			
Push-open waste Suitable for washbasin with overflow, Ø 63,5 mm	Ø 63.5 mm	0.34 kg	005052
<b>Suitable products</b>			
Console vanity unit wall-mounted Number of drawers: 1, Incl. console: Yes, Tap hole drillings possible, Handle Silver, Soft self-closing automatic with damping, 800 x 550 mm	800 x 550 mm		KT6794
Console vanity unit wall-mounted Number of drawers: 1, Incl. console: Yes, Tap hole drillings possible, Handle Silver, Soft self-closing automatic with damping, 1000 x 550 mm	1000 x 550 mm		KT6795
Console vanity unit wall-mounted Number of drawers: 1, Incl. console: Yes, Tap hole drillings possible, Handle Silver, Soft self-closing automatic with damping, 1200 x 550 mm	1200 x 550 mm		KT6796
Console vanity unit wall-mounted Number of drawers: 2, Incl. console: Yes, Tap hole drillings possible, Handle Silver, Soft self-closing automatic with damping, 1400 x 550 mm	1400 x 550 mm		KT6797 B/L/R
Console vanity unit wall-mounted Number of drawers: 2, Incl. console: Yes, Tap hole drillings possible, Handle Silver, Siphon cut-out: Yes, Siphon cover: Yes, Soft self-closing automatic with damping, 800 x 550 mm	800 x 550 mm		KT6754

**Starck 3 Built-in basin # 0302560000**

| &lt; 560 mm &gt; |

Console vanity unit wall-mounted Number of drawers: 2, Incl. console: Yes, Tap hole drillings possible, Handle Silver, Siphon cut-out: Yes, Siphon cover: Yes, Soft self-closing automatic with damping, 1000 x 550 mm	1000 x 550 mm	KT6755
Console vanity unit wall-mounted Number of drawers: 2, Incl. console: Yes, Tap hole drillings possible, Handle Silver, Siphon cut-out: Yes, Siphon cover: Yes, Soft self-closing automatic with damping, 1200 x 550 mm	1200 x 550 mm	KT6756
Console vanity unit wall-mounted Number of drawers: 4, Incl. console: Yes, Tap hole drillings possible, Handle Silver, Siphon cut-out: Yes, Siphon cover: Yes, Soft self-closing automatic with damping, 1400 x 550 mm	1400 x 550 mm	KT6757 B/L/R
Console vanity unit wall-mounted Number of drawers: 1, Incl. console: No, Without handle, Soft self-closing automatic with damping, Lay-in compartment Optional, 700 x 548 mm	700 x 548 mm	DS5311
Console vanity unit wall-mounted Number of drawers: 1, Incl. console: No, Without handle, Soft self-closing automatic with damping, Lay-in compartment Optional, 800 x 548 mm	800 x 548 mm	DS5312
Console vanity unit wall-mounted Number of drawers: 1, Incl. console: No, Without handle, Soft self-closing automatic with damping, Lay-in compartment Optional, 900 x 548 mm	900 x 548 mm	DS5313
Console vanity unit wall-mounted Number of drawers: 1, Incl. console: No, Without handle, Soft self-closing automatic with damping, Lay-in compartment Optional, 1000 x 548 mm	1000 x 548 mm	DS5314
Console vanity unit wall-mounted Number of drawers: 1, Incl. console: No, Without handle, Soft self-closing automatic with damping, Tip-on fitting, Interior system Optional, 720 x 547 mm	720 x 547 mm	LC5811
Console vanity unit wall-mounted Number of drawers: 1, Incl. console: No, Without handle, Soft self-closing automatic with damping, Tip-on fitting, Interior system Optional, 820 x 547 mm	820 x 547 mm	LC5812
Console vanity unit wall-mounted Number of drawers: 1, Incl. console: No, Without handle, Soft self-closing automatic with damping, Tip-on fitting, Interior system Optional, 920 x 547 mm	920 x 547 mm	LC5813
Console vanity unit wall-mounted Number of drawers: 1, Incl. console: No, Without handle, Soft self-closing automatic with damping, Tip-on fitting, Interior system Optional, 1020 x 547 mm	1020 x 547 mm	LC5814
Console Number of cut-outs: 1, Tap hole drillings possible, Incl. console supports: No, 800 x 550 mm	800 x 550 mm	DS102C
Console Number of cut-outs: 2, Tap hole drillings possible, Incl. console supports: No, 800 x 550 mm	800 x 550 mm	DS103C
Console Number of cut-outs: 1, Tap hole drillings possible, Incl. console supports: No, 800 x 550 mm	800 x 550 mm	DS106C
Console Number of cut-outs: 2, Tap hole drillings possible, Incl. console supports: No, 800 x 550 mm	800 x 550 mm	DS107C
Console Number of cut-outs: 1, Number of washing areas: 1, Tap hole drillings possible, Incl. console supports: No, 800 x 550 mm	800 x 550 mm	LC102C
Console Number of cut-outs: 2, Number of washing areas: 2, Tap hole drillings possible, Incl. console supports: No, 800 x 550 mm	800 x 550 mm	LC103C

**Starck 3 Built-in basin # 0302560000**

| &lt; 560 mm &gt; |

Console Number of cut-outs: 1, Number of washing areas: 1, Tap hole drillings possible, Incl. console supports: No, 800 x 550 mm	800 x 550 mm	LC106C
Console Number of cut-outs: 2, Number of washing areas: 2, Tap hole drillings possible, Incl. console supports: No, 800 x 550 mm	800 x 550 mm	LC107C
Console vanity unit wall-mounted Number of drawers: 1, Incl. console: Yes, Tap hole drillings possible, Handle, Soft self-closing automatic with damping, Lay-in compartment Optional, 800 x 550 mm	800 x 550 mm	DE4947
Console vanity unit wall-mounted Number of drawers: 1, Incl. console: Yes, Tap hole drillings possible, Handle, Soft self-closing automatic with damping, Lay-in compartment Optional, 1000 x 550 mm	1000 x 550 mm	DE4948
Console vanity unit wall-mounted Number of drawers: 1, Incl. console: Yes, Tap hole drillings possible, Handle, Soft self-closing automatic with damping, Lay-in compartment Optional, 1200 x 550 mm	1200 x 550 mm	DE4949
Console vanity unit wall-mounted Number of drawers: 2, Incl. console: Yes, Tap hole drillings possible, Handle, Siphon cut-out: Yes, Siphon cover: Yes, Soft self-closing automatic with damping, Lay-in compartment Optional, 800 x 550 mm	800 x 550 mm	DE4967
Console vanity unit wall-mounted Number of drawers: 2, Incl. console: Yes, Tap hole drillings possible, Handle, Siphon cut-out: Yes, Siphon cover: Yes, Soft self-closing automatic with damping, Lay-in compartment Optional, 1000 x 550 mm	1000 x 550 mm	DE4968
Console vanity unit wall-mounted Number of drawers: 2, Incl. console: Yes, Tap hole drillings possible, Handle, Siphon cut-out: Yes, Siphon cover: Yes, Soft self-closing automatic with damping, Lay-in compartment Optional, 1200 x 550 mm	1200 x 550 mm	DE4969
<b>Recommended faucets</b>		
Single lever basin mixer M Ceramic cartridge, Height: 175 mm, Projection: 113 mm, Spray mode: Normal spray, Aerator adjustable, recommended operating pressure: 1 - 5 bar, Noise class: I, Handle version: lever handle, 143 x 46 mm	143 x 46 mm	C11020001
Single lever basin mixer M Chrome, Ceramic cartridge, Height: 170 mm, Projection: 139 mm, Spray mode: Normal spray, Aerator adjustable, Temperature limit adjustable, recommended operating pressure: 1 - 5 bar, Noise class: I, Handle version: lever handle, 175 x 41 mm	175 x 41 mm	B11020001
Single lever basin mixer M Chrome, Ceramic cartridge, Height: 165 mm, Projection: 138,5 mm, Spray mode: Normal spray, Aerator adjustable, Temperature limit adjustable, recommended operating pressure: 1 - 5 bar, Noise class: I, Handle version: lever handle, 175 x 41 mm	175 x 41 mm	B21020001
Single lever basin mixer L Ceramic cartridge, Height: 262 mm, Projection: 136 mm, Spray mode: Normal spray, Aerator adjustable, recommended operating pressure: 1 - 5 bar, Noise class: I, Handle version: lever handle, 165 x 41 mm	165 x 41 mm	C11030001

All drawings contain the necessary measurements which are subject to standard tolerances. They are stated in mm and are non-binding. Exact measurements, in particular for customised installation scenarios, can only be taken from the finished piece.