

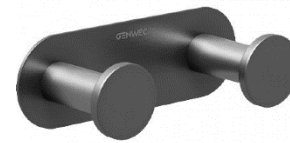
Double hanger "NIMBUS series"



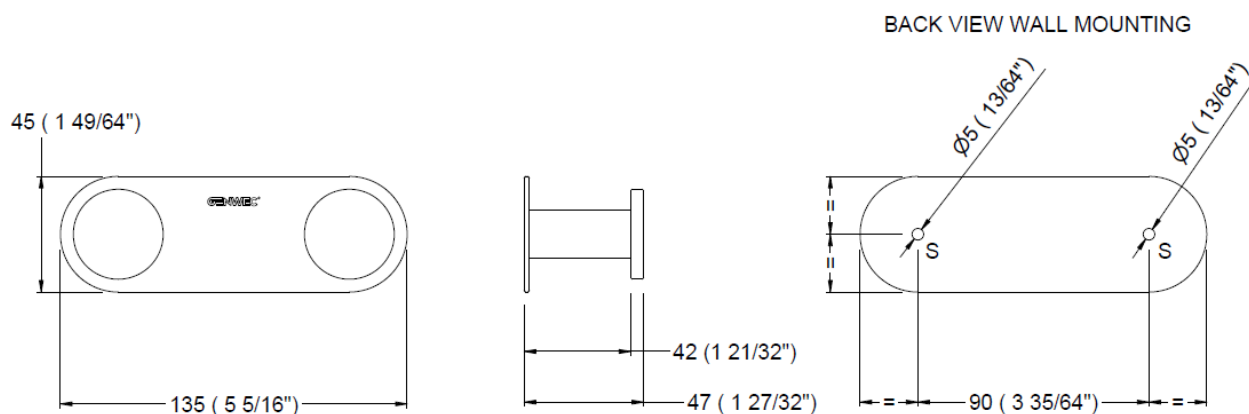
GW05 70 04 03B
AISI 304 Matt black



GW05 70 04 07B
AISI 304 Brushed gold



GW05 70 04 09B
AISI 304 Brushed metal



Dimensions: ±3%

TECHNICAL DATASHEET

COMPONENTS AND MATERIALS

- Rear wall plate – AISI 304 stainless steel. Secured to wall with two screws.
- Main body – AISI 304 stainless steel, 2,5mm thickness. Matt black powder coat (RAL 9004), 115 µm thickness GW05 70 04 03B, brushed gold finish GW05 70 04 07B and brushed metal finish GW05 70 04 09B. The product incorporates two units of this hanger. Each hanger has an internal thread that allows its installation by coupling to a threaded cylinder fixed to the wall through each of the two screws supplied.
- Fixings set - Two Ø 6mm wall plugs, two Ø 4mm screws and two threading cylinders.

OPERATION

Suitable for hotel or residential bathrooms. No specific operation instructions.

MOUNTING

Two holes must be drilled in the wall according to the drawing. After inserting the wall plugs the rear plate and two threaded cylinders are fixed with the two supplied screws. Once the rear plate and the two threaded cylinders are firmly fixed to the wall, the hangers must be screwed.

ARCHITECTURAL SPECIFICATION

Genwec hanger "Nimbus series" shall be 2,5mm thickness, AISI 304 stainless steel. Shall be RAL 9004 matt black powder coated with a thickness of 115 µm (GW05 70 04 03B), brushed golden finish (GW05 70 04 07B) or brushed metal finish (GW05 70 04 09B). Edges should be smooth for user safety.

Unit shall have two hangers fixed to the wall by means of a rear plate and two brass cylinders allowing the fixing of hangers by screwing them.

SPARE PARTS

GW05 70 90 00B – Fixings set